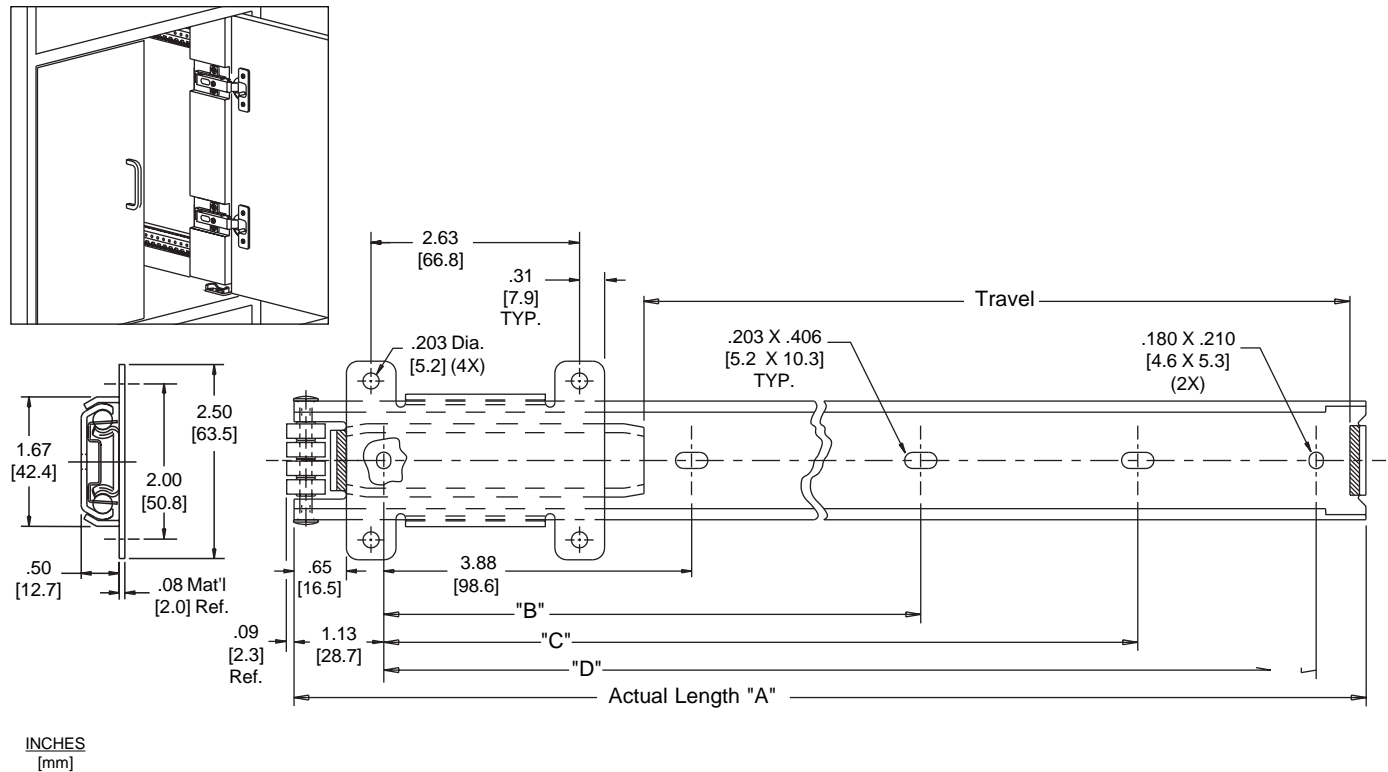


APPLICATIONS: Large concealed doors for wall units, entertainment centers, cabinets, open plan office systems, and file/storage systems. Use model 4113 whenever a heavy duty, 40 lb. capacity flipper door slide is required.

Concealed Hinge
Heavy Duty Flipper Door Slide®
Up to 40 lbs. [18.2 kg.] Capacity]



Finish Bright electro-zinc (C) or black zinc* (CB) plating available

Length 12" to 28" [303.8mm to 710.2mm]

Travel See Chart

Door Sizes 3/4" [19.1mm] thick using 35mm Salice hinge. Use 40mm hinge for doors thicker than 3/4" [19.1mm]. Vertical doors 42" [1067mm] high by 24" wide [610mm]. Horizontal doors 42" [1067mm] wide by 24" [610mm] tall.

Load Up to 40 lbs. [18.2 kg.]

Mounting Horizontal, bracket mounting, or vertical. With or without a partition.

Hardware #8 / #10 (customer supplied) pan head screws

Also Designed to accept a variety of European hinges. Customer to supply hinges. Door gap minimized to zero.

* Minimum order quantities may apply

Slide Part Number	Slide Length "A"	Slide Travel	"B"	"C"	"D"
4113-12	11.96 [303.8]	7.87 [199.9]		5.33 [135.4]	10.21 [259.3]
4113-14	13.96 [354.6]	9.87 [250.7]		7.33 [186.2]	12.21 [310.1]
4113-16	15.96 [405.4]	11.87 [301.5]		9.33 [237.0]	14.21 [360.9]
4113-18	17.96 [456.2]	13.87 [352.3]		11.33 [287.8]	16.21 [411.7]
4113-20	19.96 [507.0]	15.12 [384.1]		13.33 [338.6]	18.21 [462.5]
4113-22	21.96 [557.8]	17.12 [434.9]		15.33 [389.4]	20.21 [513.3]
4113-24	23.96 [608.6]	19.12 [485.7]	10.88 [276.4]	17.33 [440.2]	22.21 [564.1]
4113-26	25.96 [659.4]	20.38 [517.7]	11.88 [301.8]	19.33 [491.0]	24.21 [615.0]
4113-28	27.96 [710.2]	22.38 [568.5]	12.88 [327.2]	21.33 [541.8]	26.21 [665.7]

Recommended Hinges - 35mm Cup

Manufacturer	Hinge Part Number	Mounting Base Part Number
Salice Clip-On	C2P7A99	BAR3P09
Blum Clip-On	71M9550	175H7100
Mepla Clip-On	DS05-253-S-00	DS7250-N-37-00

⊠ Adjust routing depth to minimize door gap & maximize door clearance

Vertical Installation Instructions - No Partition

Spend a few minutes familiarizing yourself with the various terms in the drawings. **IMPORTANT:** Accuride recommends a trial mounting to determine the correct mounting location.

1. Fabricate and rout both ends of a 3/4" follower strip. Attach follower to slides. See Figure 1.

Ensure a 90° angle exists between the follower strip and the slides. When attaching the follower strip ensure the slide moving member is in contact with the slide roller. After the follower strip is attached, check to ensure the slides are parallel. If the slides are not parallel, they will not operate properly when installed in the cabinet!

Remember, the follower strip must be attached to the slides before the slides are installed in the cabinet.

2. Attach hinge mounting plates to follower strip. See Figure 2.

The hinge mounting plate is usually located to allow 23/32" (.72") from the front of the follower strip to the mounting holes centerline on the hinge plate. This dimension may vary depending on the hinge and mounting plate used.

3. Mount the slides to the cabinet sidewall. See Figure 3.

Ensure both slide rollers are located the same distance from the cabinet front to ensure the back of the cabinet door will be flush with the rollers when the door is in the closed position. Take care to locate the slides properly in the cabinet to eliminate door movement when the door is in the closed position.

4. Drill 35mm holes in door for the hinge cups. See Figure 3.

For hinge recommendations, see chart on front page. Allow the maximum distance between the hinge cup and the edge of the door (tab dimension) as specified by the manufacturer. This will minimize the gap between the door and the cabinet side when the door is in the closed position.

5. Install the pivot blocks and anti-scrape blocks. See Figure 4.

The pivot and anti-scrape blocks prevent premature door rotation and door scarring.

CAUTION: Closing the cabinet early will damage the door and the slides. The leverage can cause slide separation.

Note: For tall, heavy doors an extra slide may be installed at the center to prevent the door from sagging.

NOTE: Asterisked (*) dimensions are for 3/4" thick doors when using a Salice hinge. For doors exceeding 3/4" or for other hinge data, consult the hinge manufacturer.

Slide Ordering Instructions

Complete your slide order for Accuride Model 4113 by specifying the following:

Total Slides Required _____ 200 Pair C 4113 -14 D
 Slide Finish _____
 Slide Model _____
 Slide Length _____
 Optional Polybag Packaging _____

Packaging

Distributor (D) Pack: All lengths are packaged 10 pair per box. Polybag includes 1 pair of slides, pivot block kit, and screws.

Bulk (P) Pack: Slides only. Pivot blocks & screws ordered separate.

Lengths 12" - 16"	25 pair per box
Lengths 18" - 22"	20 pair per box
Lengths 24" - 28"	10 pair per box

Optional Kits

Optional Pivot Block Kit - P/N 4180-0302-XE includes:

2 Each Anti-Scrape Blocks	P/N 2336-2838-YE
2 Each Pivot Blocks	P/N 2336-2839-YE
4 Each Screws #8 X 3/4" Long	P/N 2410-3205-BE
6 Each Screws #8 X 7/16" Long	P/N 2410-3218-BE

Optional Mounting Screw Kit - P/N 4180-0187-XE includes:

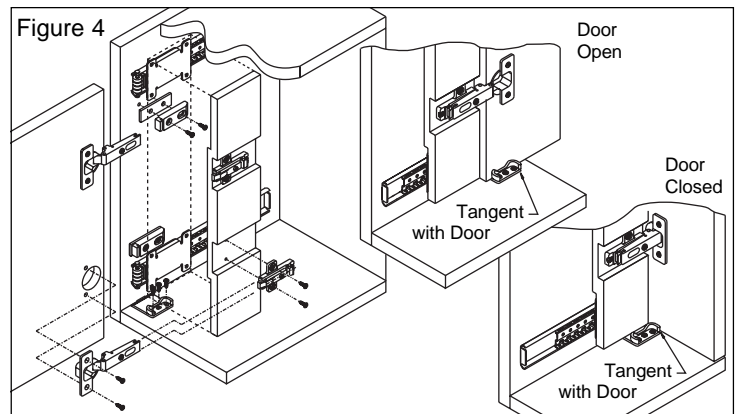
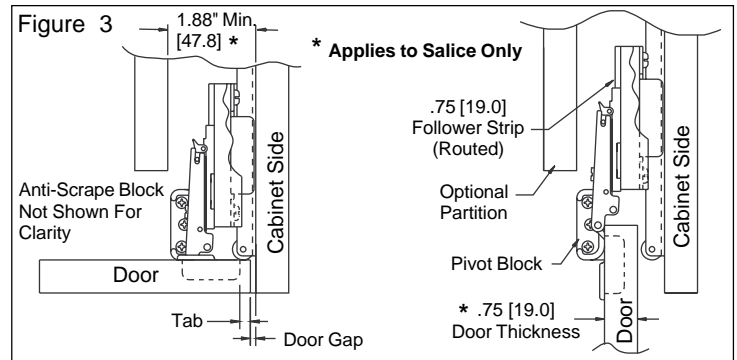
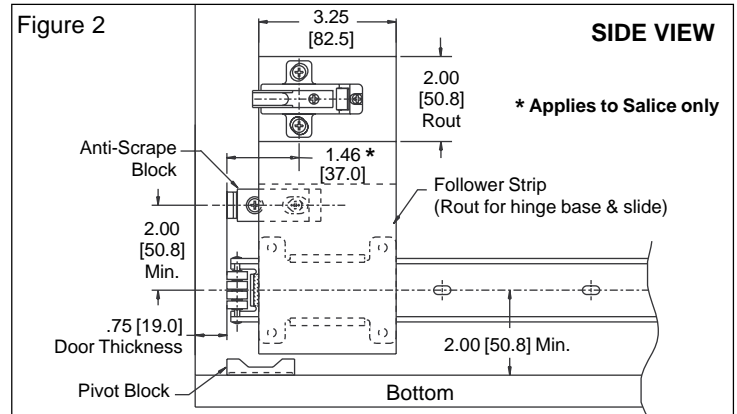
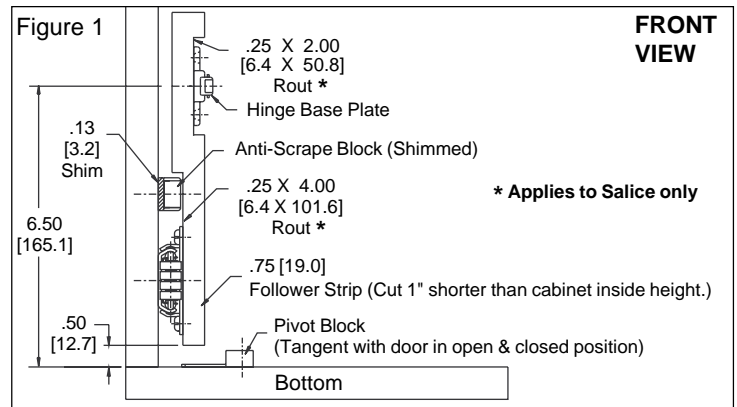
8 Each Screws #8 X 7/16" Long	P/N 2410-3218-CE
-------------------------------	------------------

Specifications

Slide members and ball retainers: Cold rolled steel
 Ball bearings: Carburized steel

Note: Specifications, materials, prices, terms, and delivery are subject to change without notice.

Copyright © 2002 Accuride International Inc. Printed in U.S.A. 3700-1052(9018)-MK539-R7-0902



Accuride

ACCURIDE INTERNATIONAL INC.

12311 Shoemaker Avenue
 Santa Fe Springs, CA 90670

TEL (562) 903-0200

FAX (562) 903-0208

www accuride .com

Manufacturing, Engineering, and Sales

United States • Germany • Japan • Mexico • United Kingdom

Copyright © 2002 Accuride International Inc. Printed in U.S.A. 3700-9018(1052)-MK040-R7-0902